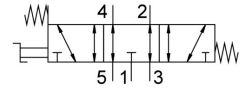


Selector valve VHEF-E-P53E-M-G18

Part number: 8080988

FESTO



Data sheet

Feature	Value
Valve function	5/3, exhausted
Actuation type	Manual
Width	20 mm
Standard nominal flow rate	530 l/min
Pneumatic working port	G1/8
Operating pressure	-0.095 MPa ... 1 MPa
Operating pressure	-0.95 bar ... 10 bar
Structural design	Piston gate valve
Reset method	Mechanical spring
Nominal width	5.2 mm
Type code	VHEF
Exhaust air function	With flow control option
Application note	Operate by hand only
Sealing principle	Soft
Mounting position	Any
Type of control	Direct
Flow direction	Reversible
Symbol	00995891
Lap	Overlap
Max. switching frequency	0.5 Hz
Explosion prevention and protection	Zone 1 (ATEX) Zone 2 (ATEX) Zone 21 (ATEX) Zone 22 (ATEX)
Operating medium	Compressed air as per ISO 8573-1:2010 [7:-:-]
Information on operating and pilot media	Operation with oil lubrication possible (required for further use)
Corrosion resistance class (CRC)	1 - Low corrosion stress
Temperature of medium	-10 °C ... 60 °C
Ambient temperature	-10 °C ... 60 °C
Actuating torque	0.7 Nm
Max. force on actuator	200 N
Max. transverse load on actuator	200 N
Product weight	235 g
Type of mounting	Optionally: Front panel mounting With through-hole
Pneumatic connection 1	G1/8

Feature	Value
Pneumatic connection 2	G1/8
Pneumatic connection 3	G1/8
Pneumatic connection 4	G1/8
Pneumatic connection 5	G1/8
Note on materials	RoHS-compliant
Cover material	PA-reinforced
Seals material	NBR
Housing material	Wrought aluminum alloy, anodized
Lever material	PA-reinforced